

SPLIT ROLLER CONVEYOR



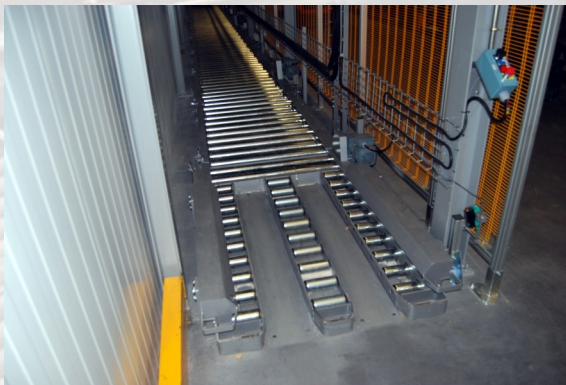
Generalities

They are suitable for the positioning of pallets using pallet trucks.

Technical data

Each roller section has a frame composed of two profiles of extruded aluminium of high quality (also available in steel or stainless steel). The rollers are anchored directly to the frame profiles. The two ends of the rollers are adapted to couple the drive and tightening sprockets, on the inside the drive chain slides through two antifriction guides.

Steel support feet.



| TECHNICAL CHARACTERISTICS | (Also available in different measures) |
|---------------------------|--|
| Transport width | 800 — 1.000—1.200 mm |
| Product weight | 1.000—1.500 Kg. |
| Rollers | Galvanized or stainless steel roller |
| Chain | Roller chain according to DIN-8187, 5/8", prestressed, with return and tightening sprockets. |
| Transport speed | Until 24 m/min. |
| Drive power | 0.55—2 KW |
| Driving | Chain rings |
| Gearmotor brand | SEW or similar |
| Motorization | Central motorization, 5/8" chain |
| Standard roller pitch | 175 mm. |
| Roller diameter | 60x3 mm. |
| Shaft diameter of rollers | 20 mm. |
| Structure | Aluminum |
| Supports | Steel, adjustable in height |
| Noise level | < 70 dB |